



Tri-Flora Plus™

Three Probiotic Strains - Two Lines of Intestinal Defense

THREE PROBIOTIC STRAINS IN ONE VEGETABLE CAPSULE



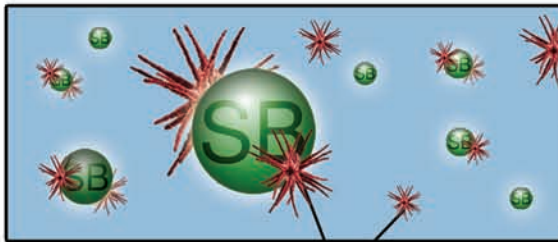
5 BILLION LIVE ORGANISMS (CFU) PER CAPSULE

Two Lines of Intestinal Defense

1st line of defense

Saccharomyces boulardii

ADHERES TO PATHOGENS



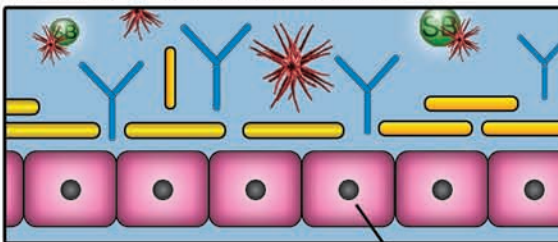
Pathogens

- Protection from pathogens and able to bind to *E.coli*
- Non-colonizing and cannot adhere to epithelial cells

2nd line of defense

Lactobacillus & Bifidobacteria

REINFORCE THE INTESTINAL BARRIER



Intestinal Barrier

Ephithelial cells

- Able to adhere to intestinal epithelial cells
- Acts to reinforce the intestinal barrier and reduce bacterial adhesion
- Naturally present in human intestinal tract

